

II. *Observationes accurate captæ, anno xvij = xxij Lugduni Bavorum, Delphis Bataviæ, & in pago Rhenoburgo. Circa mediam BAROMETRI altitudinem, mediam THERMOMETRI elevationem, tum & HYGROMETRI varietatem mediam, circa copiam PLUVIÆ, Roris, Nivis, Grandinisque, simul & circa copiam AQUÆ quæ exhalavit, & altitudinem putealis AQUÆ in PUTEO, unde nihil Aquæ exhaustum fuit toto anni decursu, de variatione HOROLOGII PORTATILIS singulis mensibus, ut certa hæc experimenta servire queant contemplatoribus HISTORIÆ NATURALIS, offert eadem harum deliciarum studiosis NICOLAUS CRUQUIUS, Geometra. R.S.S.*

BAROMETRUM.	THERMOM.	HYGROMETRUM.	Quantitas aquæ, quæ totius hujus anni decursu mense quolibet exhalaverat, in Aere aperto, & ventis perflato. <i>Rhenoburgi.</i>
	Hic calorem Atmosphærae in loco observationis destinavi ex rarefcente Aere ita ut summum frigus observatum fit ubi notabatur gradus 1000, aqua pura gelasceret ad grad. 1070, ebulliret vero ad grad. 1510.	Mensuravi hic aquæ copiam in Athmosphæra in loco observationis; juxta accrescens decrescensve pondus spongiæ ad bilancem appensæ, quam spongiam prius Muria Salis Ammoniaci humectaveram.	
	<i>lb.</i>	<i>grad.</i>	<i>pond.</i>
Januar. - - - 2851	- - - 1076	- - - 81	- - - 7
Februar. - - - 46	- - - 85	- - - 80	- - - 14
Martio - - - 35	- - - 102	- - - 80	- - - 33
Aprili - - - 46	- - - 109	- - - 60	- - - 36
Maiο - - - 57	- - - 126	- - - 57	- - - 58
Junio - - - 53	- - - 140	- - - 57	- - - 57
Julio - - - 2044	- - - 129	- - - 58	- - - 37
Augusto - - - 46	- - - 141	- - - 60	- - - 39
Septemb. - - - 54	- - - 132	- - - 61	- - - 24
Octobri - - - 55	- - - 121	- - - 71	- - - 15
Novemb. - - - 53	- - - 104	- - - 77	- - - 15
Decemb. - - - 35	- - - 96	- - - 79	- - - 12
Summa 575	1361	821	347
<i>x2</i> - - -			
Medium 2048	1113	68	toto anno. 28 pol. 11 lin.

Aquæ Cœlo delapsæ,
nimirum
Pluviæ, Roris,
Nivis, Grandinisque
Altitudo ;

Cum cauta cura, ne
exhalatione, aut alio
modo vel minimum
perierit.

<i>Delphis.</i>	<i>Rhenoburgi.</i>
<i>lin. dec.</i>	<i>lin. dec.</i>
- - 17.9	- - 21.2
- - 25.1	- - 23.8
- - 18.8	- - 28.-
- - 5.5	- - 7.5
- - 4.2	- - 2.7
- - 3.2	- - 4.8
- - 38.6	- - 28.-
- - 41.9	- - 40.2
- - 15.1	- - 14.8
- - 8.2	- - 11.3
- - 30.7	- - 29.7
- - 30.6	- - 40.-
<hr/>	
238.8	252
<hr/>	
poll. 20 (in toto anno)	21 poll.

Aquæ altitu-
do putealis,
in puteo,
mensurata a
summo ejus
margine, ad
aquæ superfi-
ciem, in fine
cujusque
mensis. Fuit
vero putei
profunditas
ima usque ad
sabulum sca-
turiens vel
currens, nihil-
que aquæ inde
eductum toto
observatōnis
tempore.

<i>ped. pol.</i>	
- - 5 : 4	
- - 4 : 11	
- - 5 : 7	
- - 6 : 10	
- - 8 : 1	
- - 9 : 3	
- - 9 : 7	
- - 9 : 7	
- - 9 : 9	
- - 9 : 8	
- - 9 : 3	
- - 8 : 2	
<hr/>	
86 : -	
<hr/>	
Med. 8 ped.	

Observatio accelerati,
vel retardati Cursus, in
Horologio portatili ac-
curatissimo.

Ut pateat
quot minuta, in quo-
que Mense, plura vel
pauciora, absolverit.
Hic (+) augmenti,
(-) decrementi nota
est.

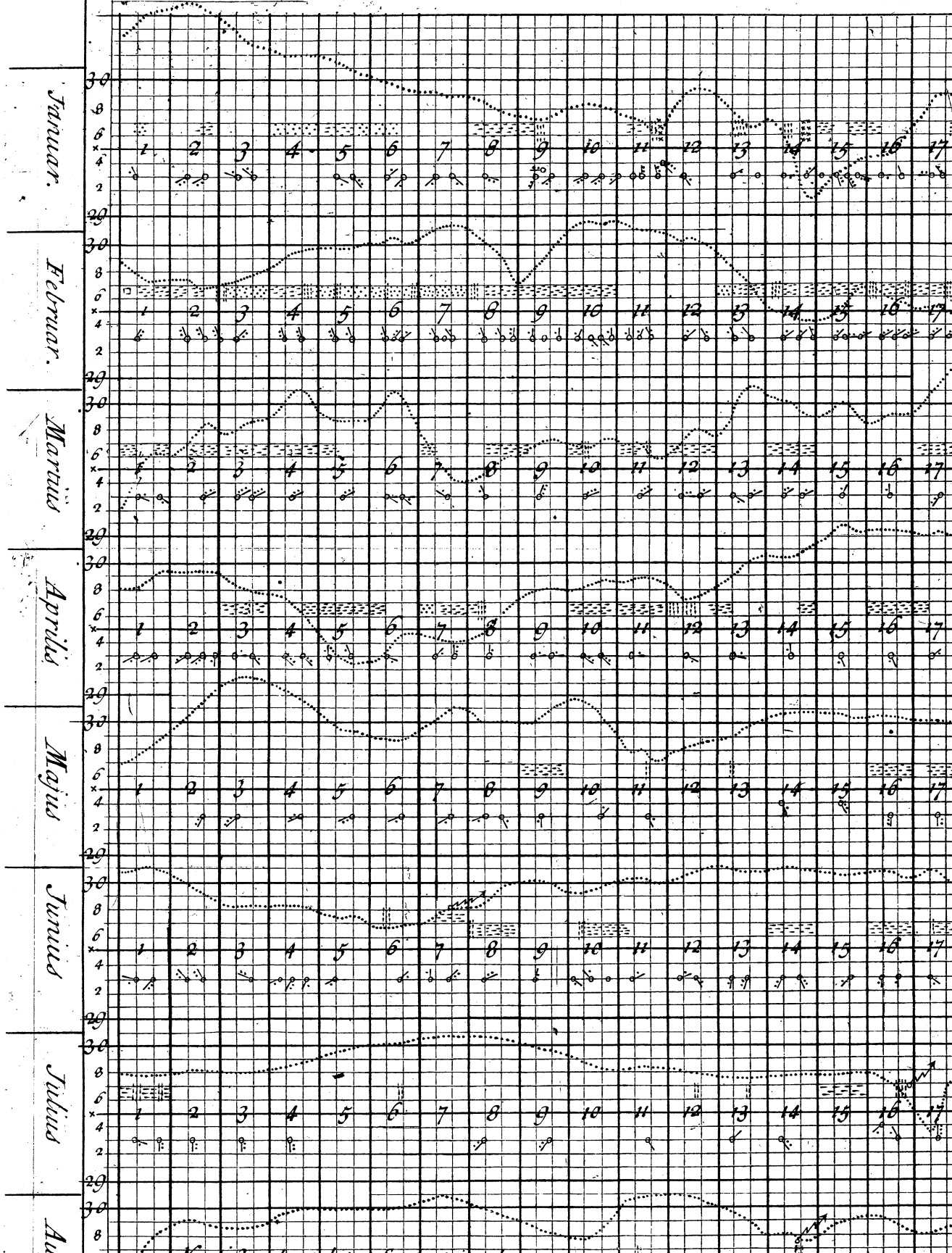
Ratio relata ad Solis
decursum.

<i>Minuta.</i>	
- - - + 151 Jan.	
- - - + 21 Febr.	
- - - + 168 Mar.	
- - - + 120 Apr.	
- - - + 123 Maio.	
- - - + 130 Jun.	
- - - + 90 Jul.	
- - - + 133 Aug.	
- - - + 24 Sept.	
- - - + 19 Oct.	
- - - + 266 Nov.	
- - - + 252 Dec.	
<hr/>	
+ 866, & - 631	
five + 235	
<hr/>	
in quoq; mens.	
20' accelerat.	

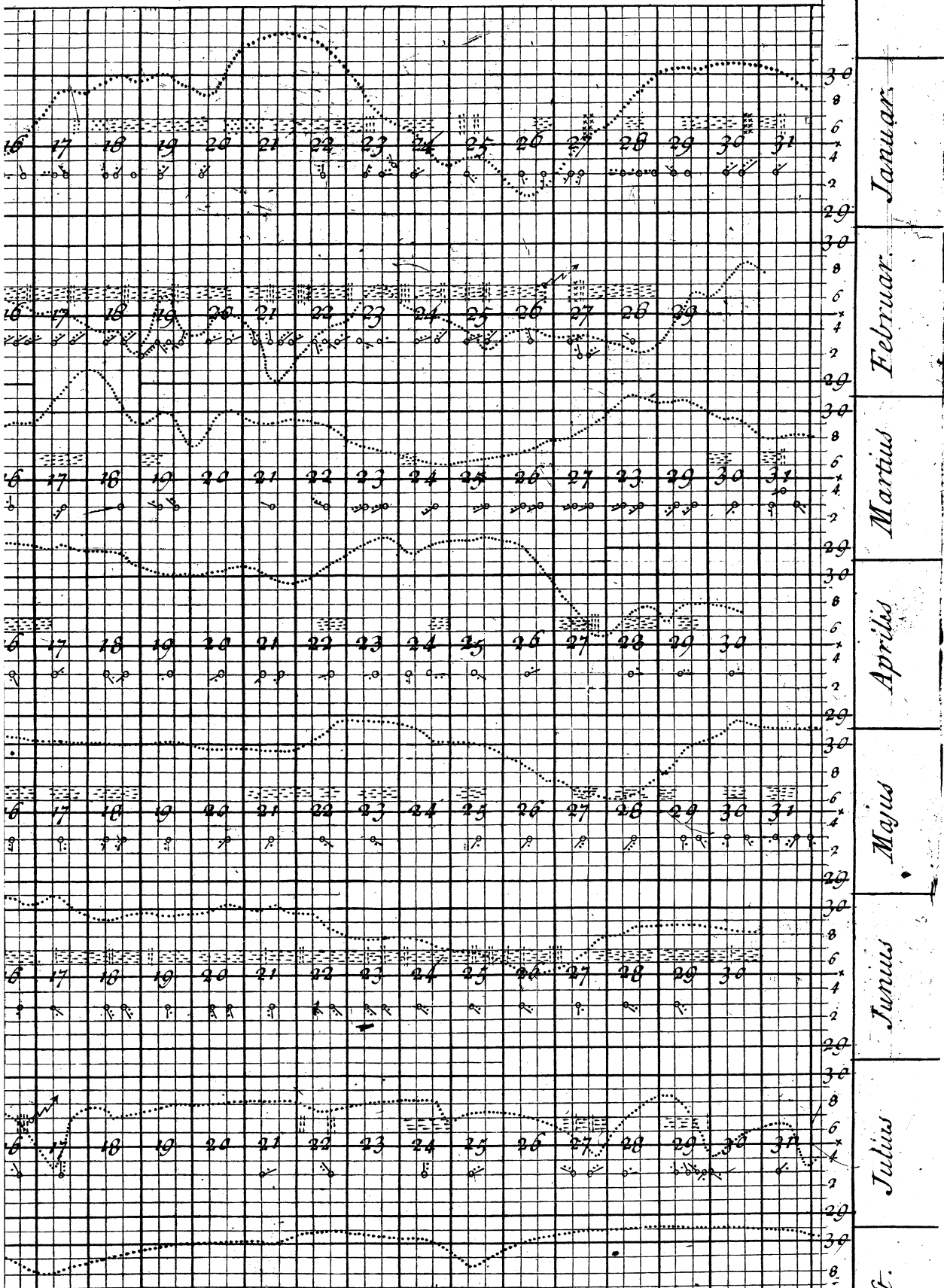
Observationes per aliquot annos factæ.

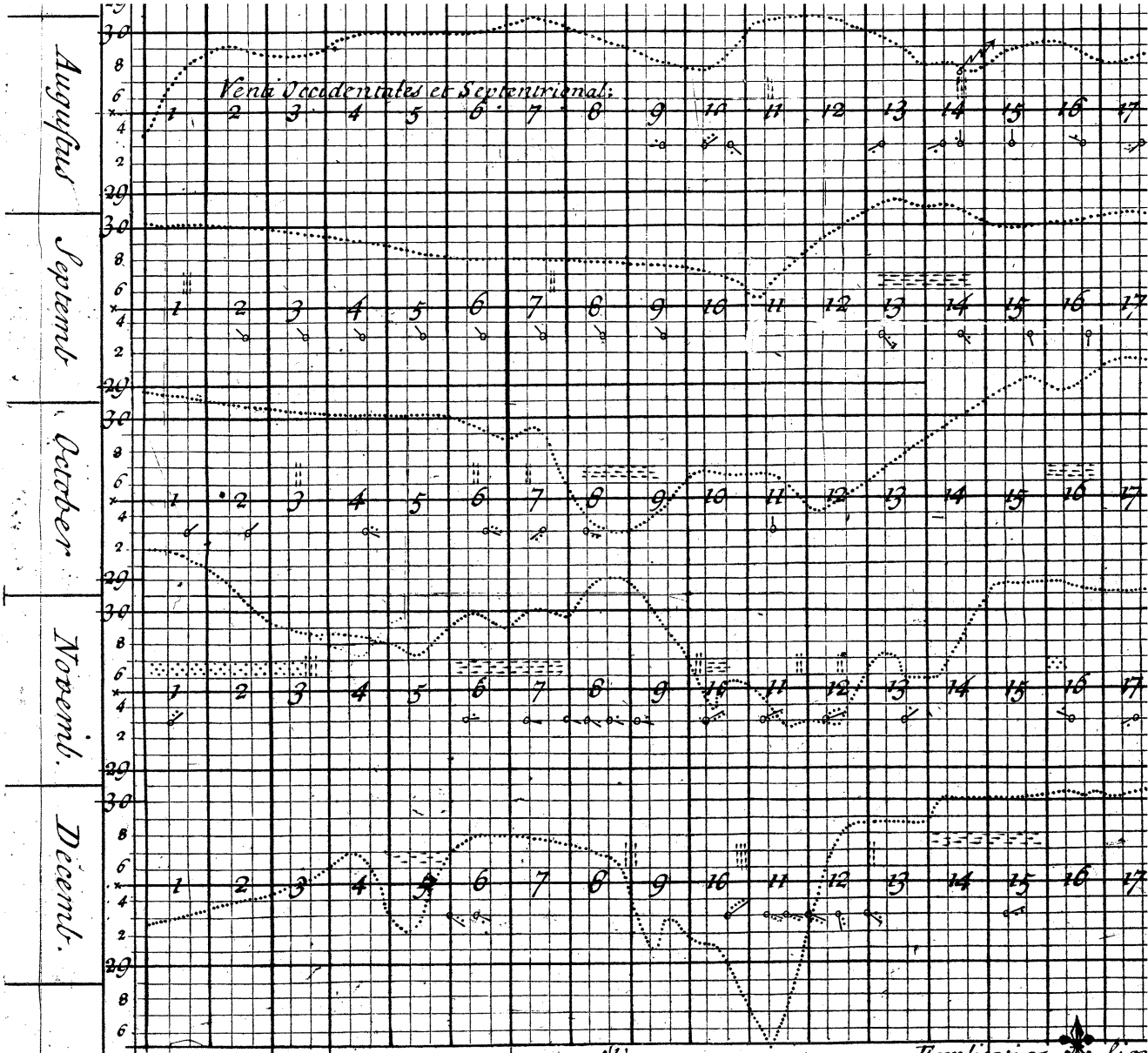
Ann. Jan. Feb. Martio	Ap. Mai. Jun. Jul. Aug. Sept.	Oct. Nov. Dec.	Sum. Med. Ann.
lb.			lb.
1720 2034 34 38	36 38 42 45 36 50	40 38 23	454 2038 1720
1721 52 42 36	29 29 43 51 46 43	42 32 29	474 39 1721
1722 76 41 32	41 42 45 56 39 50	59 37 30	528 44 1722
1723 51 46 35	46 57 53 44 46 54	55 53 35	575 48 1723
4 2053 41 55	152 166 183 176 167 197	196 160 117	169
	38 41 46 44 42 49	49 40 29	2042
<i>Grad.</i>	THERMOMETRUM		<i>Grad.</i>
1720 1087 89 86	102 126 126 145 138 121	107 91 91	1309 109 1720
1721 90 74 75	112 116 137 136 142 133	110 100 84	1309 109 1721
1722 79 90 97	109 122 134 139 140 135	117 101 90	1353 113 1722
1723 76 85 102	109 126 140 129 141 132	121 104 96	1361 113 1723
4 332 338 360	432 490 537	455 396 361	444
83 85 90	108 122 134 137 140 130	114 99 90	111
<i>pond.</i>	HYGROMETRUM		<i>pond.</i>
1721 89 82 73	80 69 64 63 68 76	76 89 88	917 76 1721
1722 88 85 76	63 62 62 63 68 70	76 81 88	882 74 1722
1723 81 80 80	60 57 57 58 60 61	71 77 79	821 69 1723
3 258 247 229	203 188 183	223 247 255	219
86 82 76	68 63 61 61 65 69	74 82 85	73
<i>linæ</i>	<i>Pluvia, &c. Delphis.</i>		<i>poll. lin.</i>
1715 11 20 36	8 15 18 95 62 36	37 47 15	400 33: 4 1715
1716 19 20 14	7 17 4 48 19 55	57 21 52	313 26: 1 1716
1717 31 15 29	29 31 28 29 28 24	32 29 28	333 27: 9 1717
1718 41 18 6	30 17 17 35 27 14	46 21 25	277 23: 1 1718
1719 33 20 19	11 17 4 12 34 23	25 24 22	235 19: 7 1719
1720 36 24 21	21 15 20 23 55 47	56 25 20	303 30: 3 1720
1721 20 31 27	59 30 34 15 41 27	57 30 48	419 34: 11 1721
1722 2 20 25	23 15 22 49 53 25	7 21 53	315 26: 3 1722
1723 18 25 19	5 4 3 39 42 15	8 31 31	240 20: 1723
9 191 193 187	193 161 150	325 249 274	241: 3
21 21 21	21 18 17	36 28 30	26: 10

Tabula, praecipue Altitudinem fere Singulis Horis BAROM.
 Londinensib; ut et ^{pro} parte Pluuias; Plagas, Violentiasque Ventorum; nec non



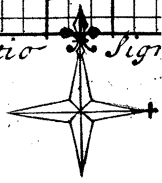
ROMETRI, totius Anni decursu 1723 Stylo Veteri, digitis
et non Coeti-faciem, Lugduni Observata exhibens.

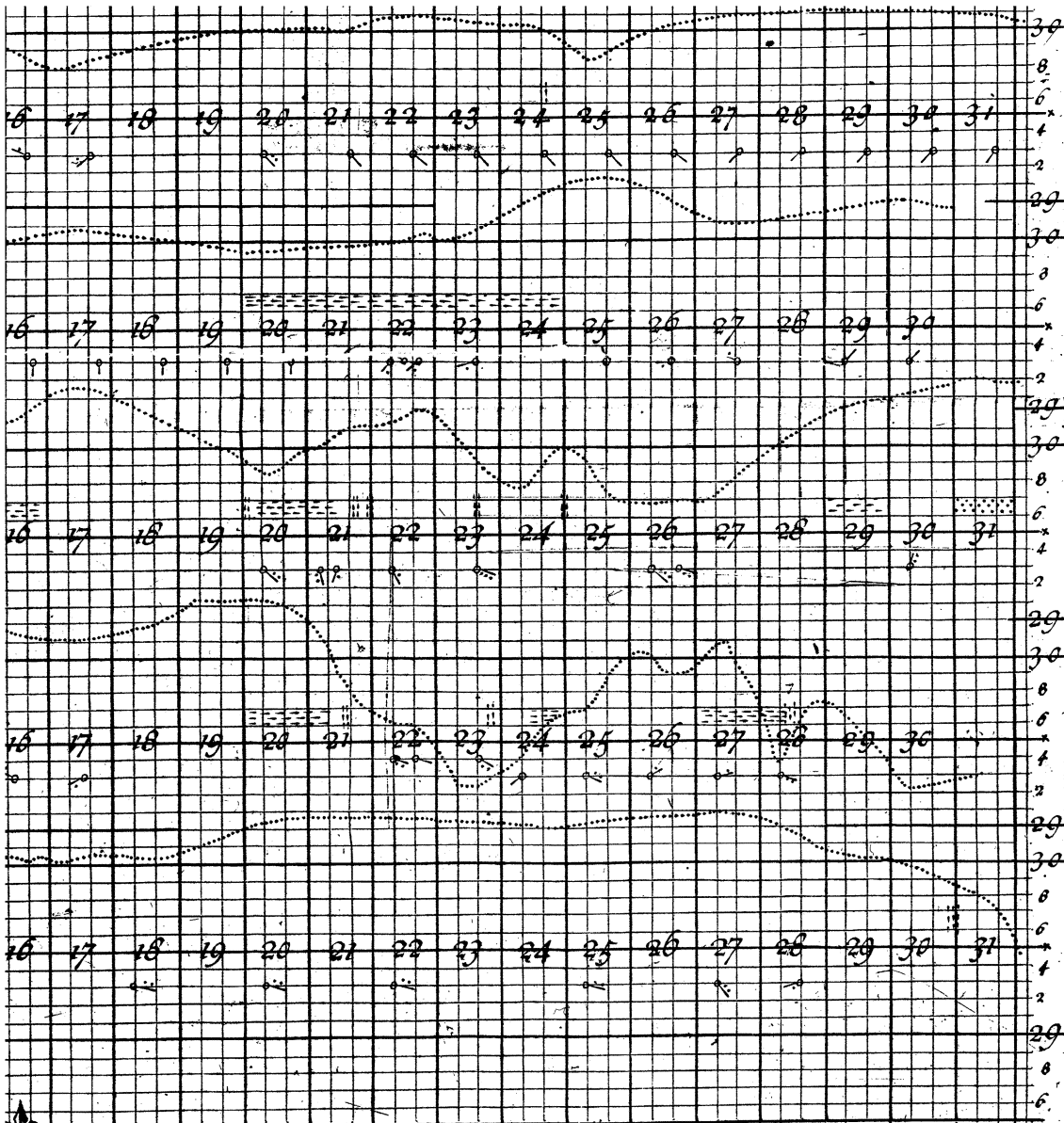




Altitudo Barometri. Velum. Vires Ventorum. Pluvia. Nix.

Explicatio Signi





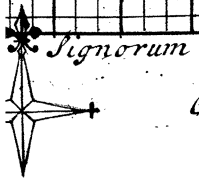
August.

Septemb.

October

Novemb.

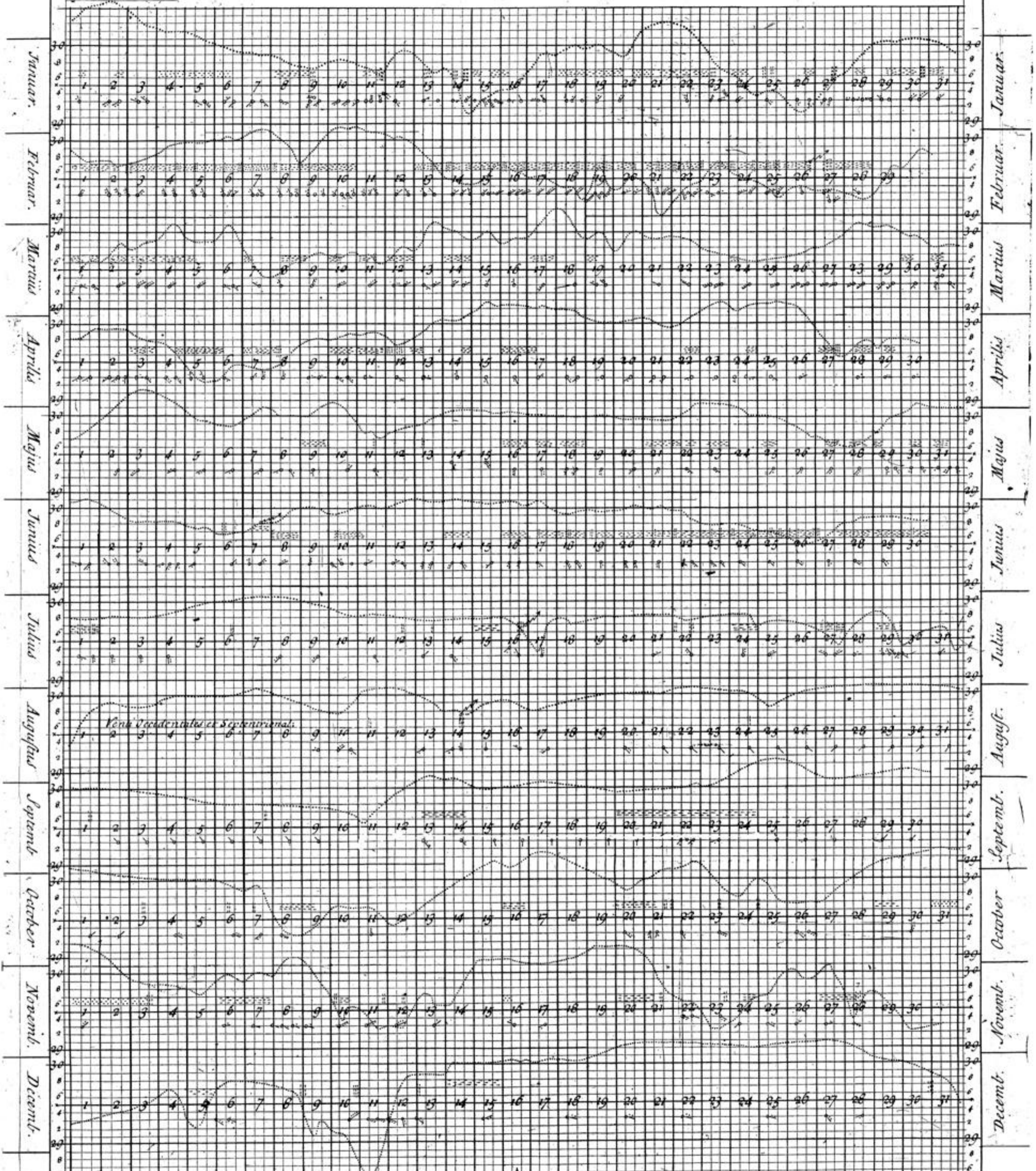
Decemb.



Signorum
 Grando. Nebula. Tonitru. Coelum Nubibus Obductum

<i>lin.</i>		<i>Pluvia Sc. Rheuburgi</i>			<i>pol. lin.</i>											
1720	35	16	13	24	29	14	20	48	54	50	39	25	367	50:7	1720	
1721	21	29	28	59	35	28	14	47	27	51	32	46	417	34:9	1721	
1722	3	20	27	29	28	27	60	64	26	19	21	61	376	31:4	1722	
1723	21	24	28	7	3	5	28	40	15	11	30	40	252	21:	1723	
4	80	80	06	119	95	74	122	199	122	122	122	172	117:	8		
4	20	22	24	30	24	19	30	50	30	30	30	43	29:	5		
<i>lin.</i>		<i>Aqua que exhalavit Rheuburgi.</i>			<i>pol. lin.</i>											
1720	10	10	10	25	44	55	59	56	50	30	10	12	371	30:11	1720	
1721	8	9	15	54	47	60	48	42	27	20	22	10	362	30:	2 1721	
1722	5	7	20	28	54	54	65	59	34	14	13	13	366	30:	6 1722	
1723	7	14	33	56	58	57	37	39	24	15	15	12	347	28:11	1723	
4	30	40	78	143	203	226	209	196	135	79	60	47	120:	6		
4	8	10	20	36	51	56	52	49	34	20	15	12	50:	2		
<i>ped. pol.</i>		<i>Putealis Aquæ Altruido.</i>			<i>ped. pol.</i>											
1720	6:	6:	3 6: 5	6:	7 6:	6 8:	8:11	9:	8:3	6:11	5:8	5:5	84:	7:	1720	
1721	5:6	5:	6 4: 6	4:	2 5:	7 7:	8: 1	7: 9	7:7	6: 3	4:6	4:4	70:	9 5:11	1721	
1722	6:	5:	7 5:11	6:	1 6:10	7:11	8:	7:10	7:4	7: 9	7:3	4:6	81:	6: 9	1722	
1723	5:4	4:11	5: 7	6:10	8: 1	9: 3	9: 7	9: 7	9:9	9: 8	9:3	8:2	96:	8:	1723	
4	22:10	22:3	22:5	23:8	27:	32:	234:7	34:2	32:11	30:7	26:8	22:5	27:	8		
4	5:8	5:7	5:7	5:11	6:9	8:	8:8	8:6	8:3	7:8	6:8	5:7	6:	11		
<i>Mimica</i>		<i>Horologii portatilis Curfus.</i>														
1722	34	9	7	5	38	55	89	78	84	8	151	246	12	402	1722	
1723	151	11	187	139	142	149	109	113	4	1	246	232	12	727	1723	
2	97	8	194	134	180	204	198	35	80	9	397	478	12	129		
4	48	4	97	67	90	102	99	17	40	4	199	239	12	564		
<i>1. Jan. Feb. Mar.</i>		<i>Apr. Maii Jun.</i>			<i>Jul. Aug. Sept. Oct. Nov. Dec.</i>											

Tabula, praecipue Alitudinem fere Singulis Horis BAROMETRI, totius Anni decursu 1723 Stylo Veteri, digitis Londinensib; ut et ^{pro} parte Pluvias; Plagas, Violentiasque Ventorum; nec non Coeli-faciem, Lugduni Observata exhibens.



Venti Occidentales et Septentrionalis

Explicatio Signorum



Altitudo Barometri. Velum. Vires Ventorum. Pluvia. Nix. Grando. Nebula. Temitru. Coelum Nubibus Obductum